



Naval Facilities Engineering Systems Command,
Marianas
PSC 455, Box 195
FPO AP 96540-2937

MILITARY RELOCATION TO GUAM AND CNMI PROGRAMMATIC AGREEMENT (PA) MEMO #1

Project: J-402 Outdoor Playing Fields	Date: September 5, 2025 Comment Period Open Until: October 20, 2025
Project Location: Marine Corps Base Camp Blaz (MCBCB), Finegayan, Guam	Prepared By: NAVFAC Pacific

PROJECT SUMMARY:

This PA Memo supports the proposed construction of outdoor playing fields consisting of an outdoor running track, multipurpose soccer/football fields, softball fields, and a support facility at MCBCB, Finegayan, Guam. This project is part of the operational, base support, training and quality of life requirements, and facilities and infrastructure needs establishing the base.

This project was identified after preparation of the Final Environmental Impact Study (FEIS) for the military relocation to Guam and the Commonwealth of the Northern Mariana Islands (CNMI) and Appendix E under various projects of the 2011 Programmatic Agreement (PA) among the Department of Defense, the Advisory Council on Historic Preservation, the Guam State Historic Preservation Officer, and the Commonwealth of the Northern Mariana Islands State Historic Preservation Officer Regarding the Relocation to the Islands of Guam and Tinian.

In accordance with Stipulation IV.E.2.a., this PA Memo presents information to allow the Guam State Historic Preservation Officer (SHPO) and the public to provide comments on the identification and evaluation of historic properties and the finding of effects.

PROJECT LOCATION:

J-402 is located at Marine Corps Base Camp Blaz, Finegayan, Guam. (Figure 1). The Area of Potential Effect (APE), is entirely located within the J-001B Utilities and Site Improvements (U&SI) project area. The project area is on the limestone plateau above the western cliffs of northern Guam. The majority of the interior of the island is composed of Mariana Limestone, and the southern part of the island is underlain mostly by volcanic rock.

The project area is located within the village or municipality of Dededo. Although the general area is now commonly referred to as Finegayan or North Finegayan, its pre-World War II name was Machanao.

The APE measures 1.75 hectares (4.5 acres).

-
- 1** This PA Memo is required by Stipulation IV.E.2.a. of the PA as a means for interested members of the public to provide comments on the identification and evaluation of historic properties. Stipulation IV.E.1.b. of the 2011 PA requires the DoD to take into account comments received within 45 days of the date of the delivery of this PA memo to the SHPO and public notification via the CRI website.

PROJECT DESCRIPTION:

The proposed construction of outdoor playing fields consists of a running track, lighted multipurpose field for soccer and football, a soccer/football multipurpose field without lights, and two lighted softball fields. Each softball field will be provided with reinforced concrete dugouts and concrete bench inside of each dugout. The track with multi-purpose field will consist of a synthetic turf surface. The soccer/football multi-purpose field and two softball fields will consist of a natural grass surface. This project would also provide a restroom facility, a field support building with covered public space concessions, press box, training area, storage, infrastructure, utilities, walkways, and other associated components.

Efforts include construction preparation such as fine grading and clearing. Other work would involve temporary erosion and sediment control. Site improvements such as paving, retaining walls, and landscaping would be completed. Mechanical and Electrical systems would also be installed.

IDENTIFICATION OF HISTORIC PROPERTIES:

The 2011 PA describes the overall efforts taken to identify historic properties in Stipulation IV, including archival research, oral studies, and interviews. The APE was archaeologically investigated for prior projects, notably J-001b U&SI. Enclosure 1 is list of references for identification efforts in and near the APE. A reasonable and good faith effort to carry out appropriate identification efforts consistent with 36 CFR Part 800.4(b)(1) has been performed. The 2011 PA directs the PA Memo process to allow for members of the public to provide input on the identification and evaluation of historic properties. The input sought includes knowledge on specific historic properties not yet identified by previous efforts, and assistance in identifying issues relating to effects on historic properties.

Figure 2 illustrates the scope of survey efforts. Archaeological studies identified the presence of historic properties in the J-001B project area. The J-001B U&SI project mitigated adverse effects to historic properties as stipulated in the 2011 PA. Subsequently, the 2018 resolution agreement between the Navy and Guam SHPO implemented monitoring and archaeological investigation for post-review discoveries identified during J-001B U&SI activities. The historic properties underwent mitigation in accordance with the 2011 PA. These efforts did not identify historic properties or cultural items within the proposed J-402 APE.

In accordance with Stipulation VI.F. of the PA, the DoD has retained a full-time archaeologist to provide site checks, oversee coordination and execution of the archaeological mitigation measures in the PA and to provide quality control. The 2018 Resolution Agreement also requires the Department of the Navy (DON) to notify the Guam SHPO of any new discoveries and evaluate them to assess effects.

FINDING OF EFFECTS:

The DON proposes a no historic properties affected finding, as there are no historic properties within the APE.

In the event of a post review discovery the DON will follow the procedures outlined in Stipulation XI of the 2011 PA. If comments received during the PA Memo process result in new information regarding historic properties, consultation will continue pursuant to the 2011 PA. Otherwise, PA Memo #2 will not be required as there will be no further mitigation.

Enclosure 1

Athens, J.S.

2009 *Final Archaeological Surveys and Cultural Resources Studies on Guam and the Commonwealth of the Northern Mariana Islands in Support of the Joint Guam Build-Up Environmental Impact Statement Volume I: Guam*. Prepared by International Archaeological Research Institute, Inc. Honolulu, HI.

Church, M.K., J.H. Hokanson, J.D. Gallison, and M.H. Jennings

2009 *Cultural Resources Survey of 297 Acres at Andersen Air Force Base, Guam, Contract Number F41924-03-D-8599, Task Order 0031*. Prepared for David T. Lotz, Environmental Flight, Andersen Air Force Base, Guam. e2M Engineering Environmental Management, Inc., Englewood, Colorado.

Dixon, B. and S. Walker

2011 *Cultural Resource Investigations Conducted in the Territory of Guam Supporting the Joint Guam Build-Up Environmental Impact Statement: Final Archaeological Surveys on Guam 2009 at Proposed Utility Sites, Harmon Property, and Andersen AFB*. Prepared for Naval Facilities Engineering Command, Pacific Division, Pearl Harbor, Hawaii. TEC Inc., Honolulu, Hawaii.

Dixon, Boyd, S. Walker and R. Schaefer

2011 *Final Report Cultural Resource Investigations Conducted in the Territory of Guam Supporting the Joint Guam Build-Up Environmental Impact Statement: Final Archaeological Surveys on Guam 2010 on Andersen AFB*. Prepared by the Naval Facilities Engineering Command, Pacific Division, by TEC Inc.

Dixon, B., T. Rudolph, A. Jalandoni, I. Nelson, M. Hroncich-Conner, S. Leary, R. Schaefer, E.

Dixon, B., D. Welch, T. Rudolph, R. Jones, and I. Nelson

2018 *Final Technical Report: Archaeological Data Recovery in Support of the J-0001B Utilities and Site Improvements at Naval Base, Guam Telecommunications Site, Guam*. Prepared for Naval Facilities Engineering Command, Pacific Division, Pearl Harbor, Hawaii. TEC Inc. and the University of Guam.

Haun, Alan E.

1988 *Archaeological Reconnaissance Survey and Field Inspections of Relocatable Over-the-Horizon Radar Sites on Guam, Mariana Islands, Micronesia*. Prepared for Wilson Okamoto and Associates, Inc., Paul H. Rosendahl, Ph.D., Inc. Hilo, HI.

Hokanson, Jeffrey H., J. David Kilby, Michael Church and Mary R. McCurdy

2008 *Cultural Resources Survey for a Perimeter Fence and Portions of the Munitions Storage Area, Andersen Air Force Base, Guam*. Prepared for Andersen Air Force Base. Engineering-environmental Management, Inc., Englewood, Colorado.

Kurashina, H., D. Wooster, T. McGrath, and J. Toenjes
1988 Archaeological Investigations of the Route 3 Road Corridor, Territory of Guam, Mariana Islands. Prepared for Juan Tenorio and Associates, Inc. Agana, Guam.

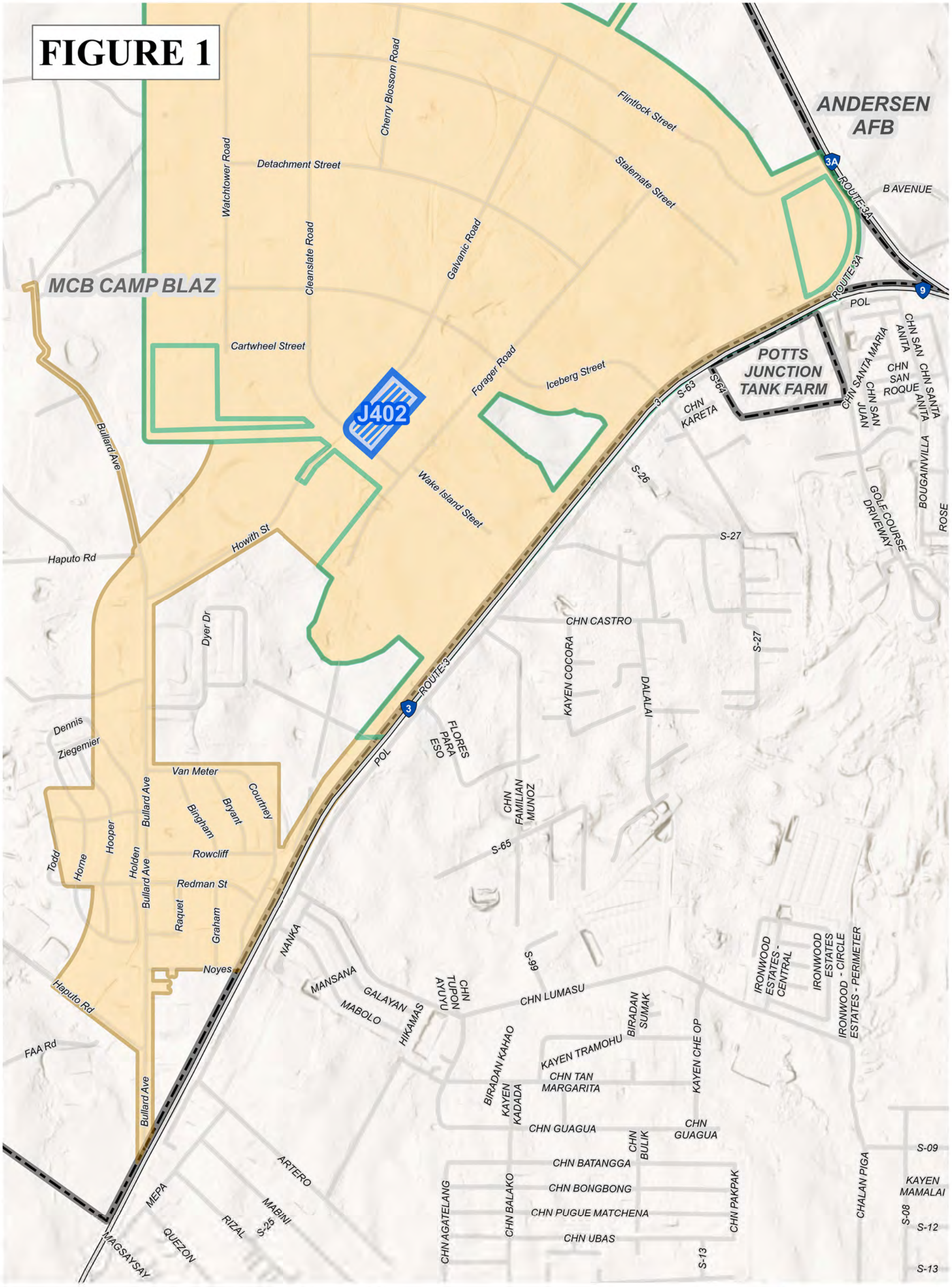
Mohlman, Geoffrey
2015 *Final Report Historic Inventory Survey Andersen Air Force Base, Territory of Guam*. Prepared for NAVFAC Marianas by Southeastern Archaeological Research, Inc.

Pacheco, T., T. Rieth, and R. DiNapoli
2020 *Archaeological Monitoring in Support of Finegayan Utilities and Site Improvements Phase I, Naval Computer and Telecommunications Station, Guam*. 4 Volumes. Prepared for Department of the Navy, Pacific Division, Naval Facilities Engineering Command, Pearl Harbor, Hawaii. International Archaeological Research Institute, Inc., Honolulu, Hawaii.

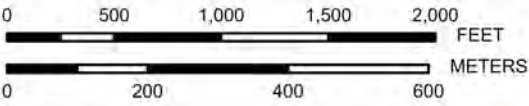
Welch, David J.
2010 *Archaeological Surveys and Cultural Resources Studies on the Island of Guam in Support of the Joint Guam Build-Up Environmental Impact Statement VOLUME I: NARRATIVE. Contract N62742-06-D-1870, Contract Task Order No. 0010*. Prepared for Department of the Navy, Naval Facilities Engineering Command, Pacific Pearl Harbor, Hawai'i

Yee et al 2004 Yee, S., D. Welch, and J. Allen
2004 *Archaeological Overview Survey Report for Andersen Air Force Base, Guam*. Prepared for 36 CES/CEVN, AAFB, Guam and Earth Tech, Inc., Honolulu, HI. Prepared by International Archaeological Research Institute, Inc. Honolulu, HI.

FIGURE 1



Camp Blaz- J-402 Outdoor Playing Fields
- PA Memo - Construction Area



PREPARED BY:
Naval Facilities Engineering Command Pacific Division
Guam Program Management Office
DATE: 12 Aug 2025



Coordinate System: Geographic
Projection: N/A
Datum: D WGS 1984

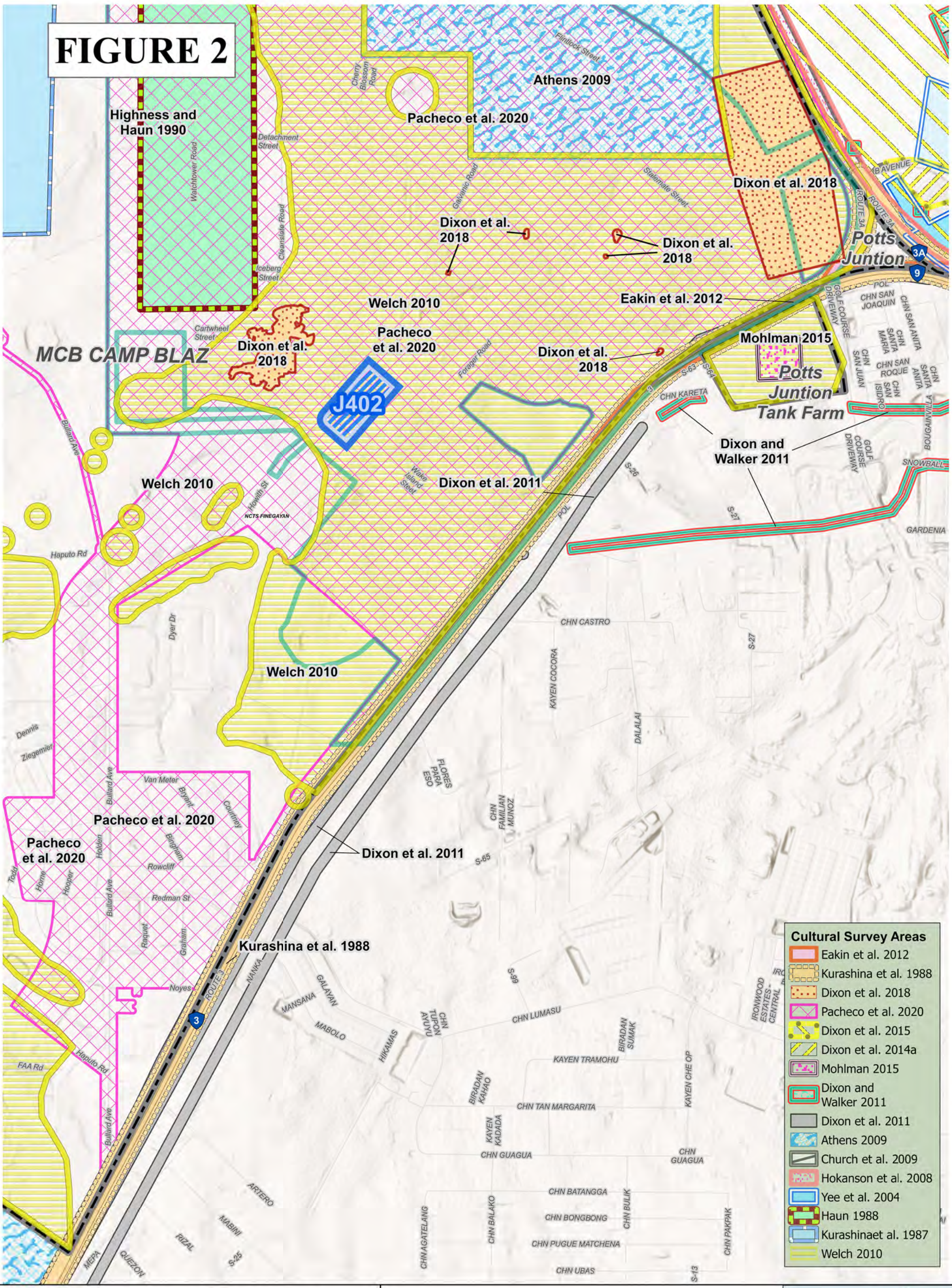
Legend

- J-402 Outdoor Playing Fields - APE
- J-001B (U&SI) Construction Footprint
- PA Memo Area J-001B (2014, 2017, 2021)
- Military Installations
- Guam Hwys.
- Road Centerline (JRM)

MAMIZU APE
J-402 - 4.5 ac.

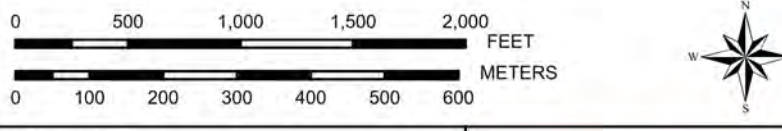


FIGURE 2



- Cultural Survey Areas**
- Eakin et al. 2012
 - Kurashina et al. 1988
 - Dixon et al. 2018
 - Pacheco et al. 2020
 - Dixon et al. 2015
 - Dixon et al. 2014a
 - Mohlman 2015
 - Dixon and Walker 2011
 - Dixon et al. 2011
 - Athens 2009
 - Church et al. 2009
 - Hokanson et al. 2008
 - Yee et al. 2004
 - Haun 1988
 - Kurashina et al. 1987
 - Welch 2010

Camp Blaz - J-402 Outdoor Playing Fields
- PA Memo - Survey Areas



PREPARED BY:
Naval Facilities Engineering Command Pacific Division
Guam Program Management Office
DATE: 13 Aug 2025



Coordinate System: UTM Zone 55 North
Projection: Transverse Mercator
Datum: D WGS 1984

Legend

- J-402 Outdoor Playing Fields - APE
- J-001B (U&SI) Construction Footprint
- Military Installations

*Hornbostel 1924, Reinman 1966, and Osboern 1947 are approximate



Military Relocation PA Memo Comment Form

2025

If submitting via **e-mail**, scan and send to: NFM-CRIWebComments@us.navy.mil

If submitting via **postal mail**, send to:

Attn: CRI Web Comments
Code EV23, NAVFAC Pacific
258 Makalapa Drive, Suite 100
JBPHH, Hawaii 96860-3134

Submitted comments will be posted on the Navy's Cultural Resources Information (CRI) web site. Information presented on the CRI web site is considered public. The sections highlighted in **red** are required to be completed in order for a comment to be posted.

Privacy Act Statement

Personal information will only be used to contact you regarding the comments you submit. This information will only be shared with another government agency if your inquiry relates to that agency, or as otherwise required by law. We will not create individual profiles or give your information to any private organization. While you must provide a valid e-mail address or postal address, please **DO NOT** include personally identifying information such as a social security number.

By submitting this comment form, you agree not to include content that is offensive in nature, such as profanity, personal attacks on individuals, and racist or abusive language.

PROJECT: J-402 Outdoor Playing Fields – Construction

SUBJECT: PA Memo#1

Date: _____

Name: _____

CRI User Name (if you don't want your real name to be posted with your comment on the CRI web site):

E-Mail Address: _____

and/or

Postal Mail Address: _____

COMMENTS: _____

This image shows a single sheet of white paper with horizontal ruling lines. The lines are evenly spaced and run across the width of the page. There are no margins, text, or other markings on the paper.